



Ex CERTIFICATED BREATHING&DRAINING DEVICE

EXPLOSION-PROOF ENCLOSURE ACCESSORIES

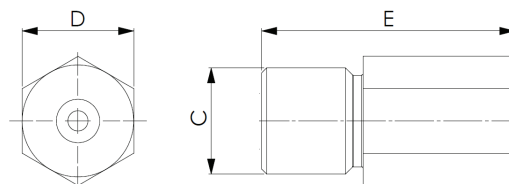
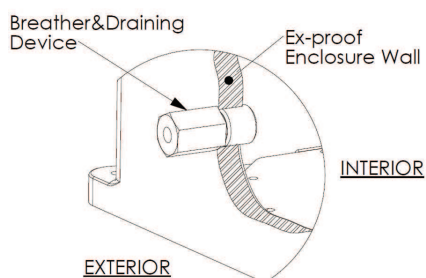


DESCRIPTION

Breathing&draining devices which permits an exchange between the atmosphere within an enclosure and the surrounding atmosphere or permits liquids to flow out from an enclosure and which maintains the integrity of the type of protection.

It is suitable for the installation in the industrial plants with potentially hazardous atmosphere classified as Zone 1 and Zone 2 for gases and Zone 21 and Zone 22 for combustible dusts.

INSTALLATION SCHEME



SPECIFICATIONS

EXPLOSION PROTECTION

Conformity	Directive ATEX 94/9/EC
Certification	ATEX - INE 12ATEX9013U IECEX - INE 12.0002U Ex TR CU - TC RU C-IT.ГБ05.В.00640 UL - in progress
Marking	II 2 GD Ex-d IIC T6/T5/T4 Gb Ex-e IIC Gb Ex-tb IIIC T85°C/100°C/135°C Db IP66

TECHNICAL DATA

Ambient Temperature	ATEX -60°C / +65°C IECEX -60°C / +65°C
Material	Stainless steel AISI 304 or AISI 316L Brass CW614N-MS Hastelloy Inconel
IP Rating	IP66
Sealing:	O-Ring made in Silicone (Optional)

CATALOG NO.	C	D	E
VS-61090-1	1/4" NPT	17	50
VS-61090-4	1/2" NPT	22	50
VS-61090-5	1/2" ISO	22	50
VS-61090-9	1/2" NPT	22	50
VS-61090-10	1/2" ISO	22	50
VS-61090-11	1/8" NPT	17	50
VS-61090-14	M25	27	62
VS-61090-15	3/4" NPT	27	62

APPLICATION NOTE

1. Permissible maximum enclosure volume is 68000 cm³ (68 lt).